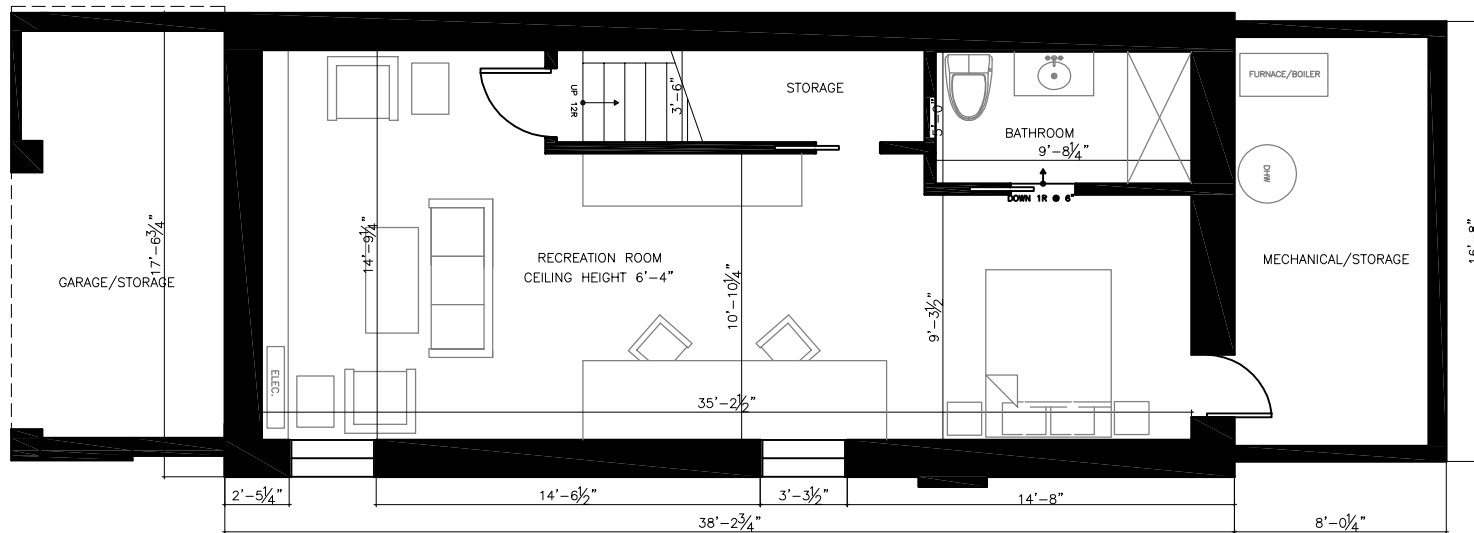


inhabit home design

KELLY WILSON DESIGN GROUP INC.
204 HOLBORNE AVE, TORONTO, ON M4C 2P9 416-799-2426

project: 35 wheeler ave, toronto

date: may 16, 2011



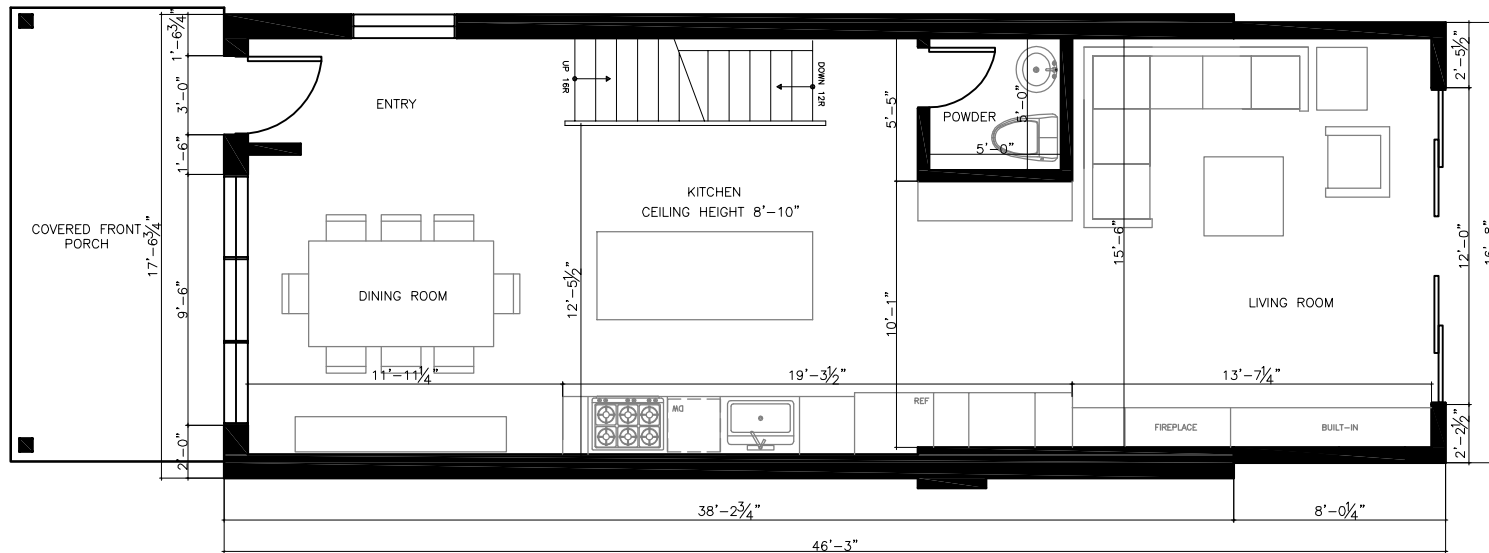
basement

inhabit home design

KELLY WILSON DESIGN GROUP INC.
 204 HOLBORNE AVE, TORONTO, ON M4C 2R9 416-799-4426

project: 35 wheeler ave, toronto

date: nov 10, 2011



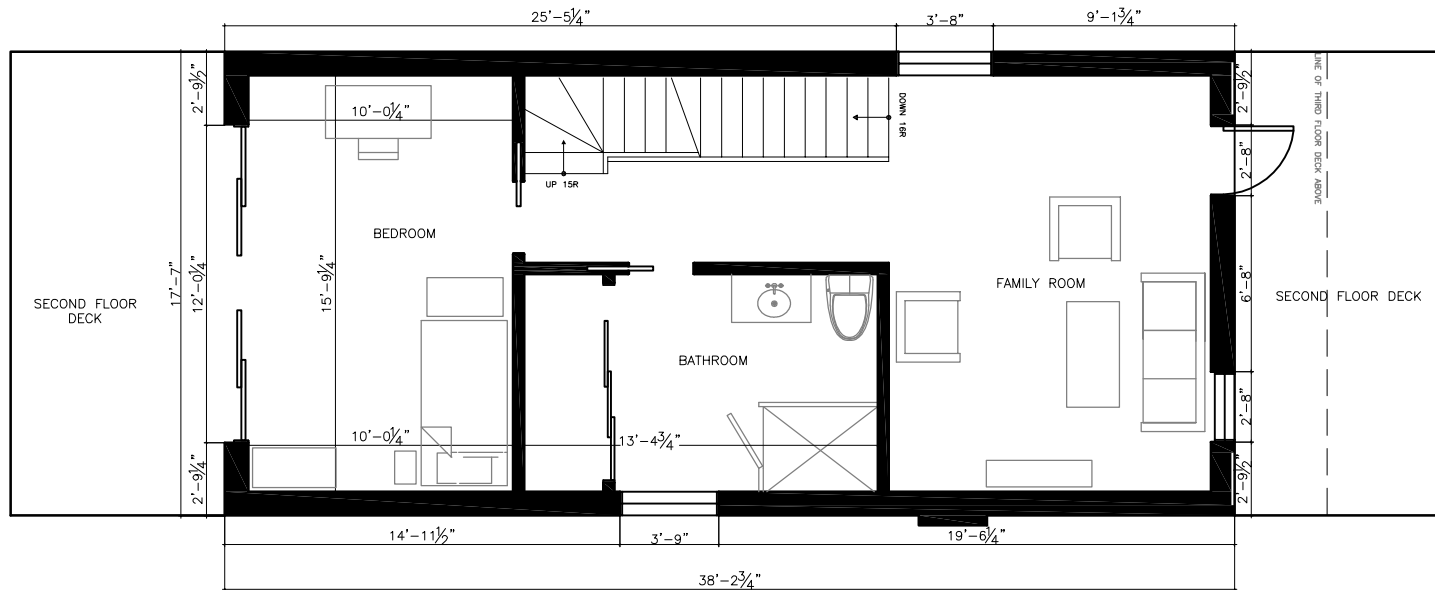
main floor

inhabit home design

KELLY WILSON DESIGN GROUP INC.
204 HOLBORNE AVE, TORONTO, ON M4C 2R9 416-799-4426

project: 35 wheeler ave, toronto

date: nov 10, 2011



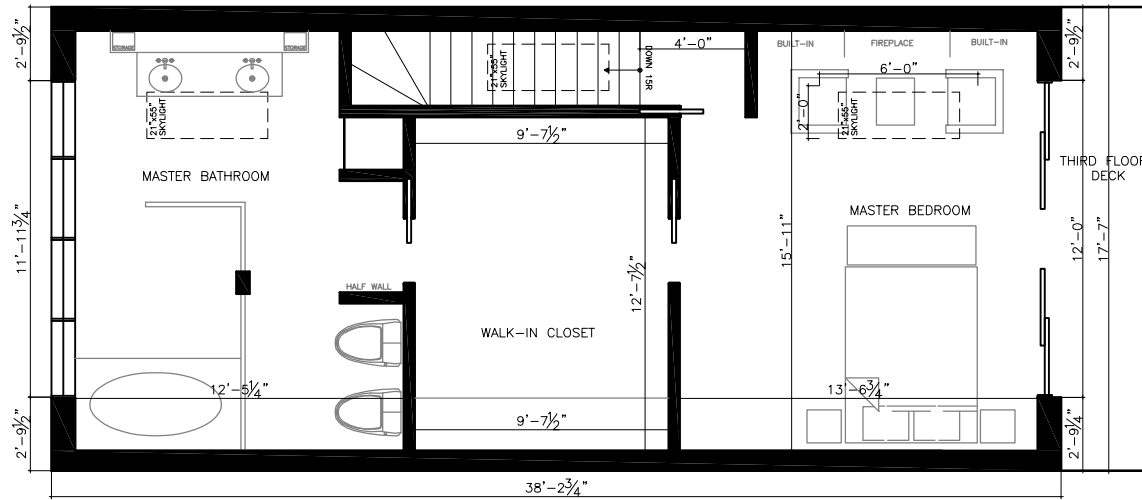
second floor

inhabit home design

KELLY WILSON DESIGN GROUP INC.
204 HOLBORNE AVE, TORONTO, ON M4C 2R9 416-799-4426

project: 35 wheeler ave, toronto

date: nov 10, 2011



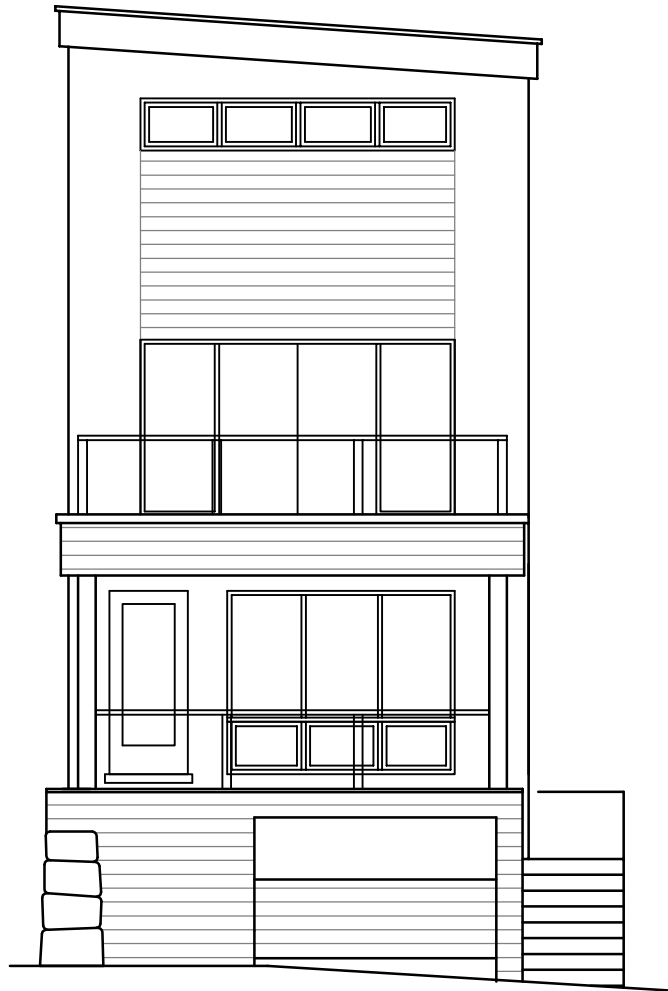
third floor

inhabit home design

KELLY WILSON DESIGN GROUP INC.
204 HOLBORNE AVE, TORONTO, ON M4C 2R9 416-799-4426

project: 35 wheeler ave, toronto

date: nov 10, 2011



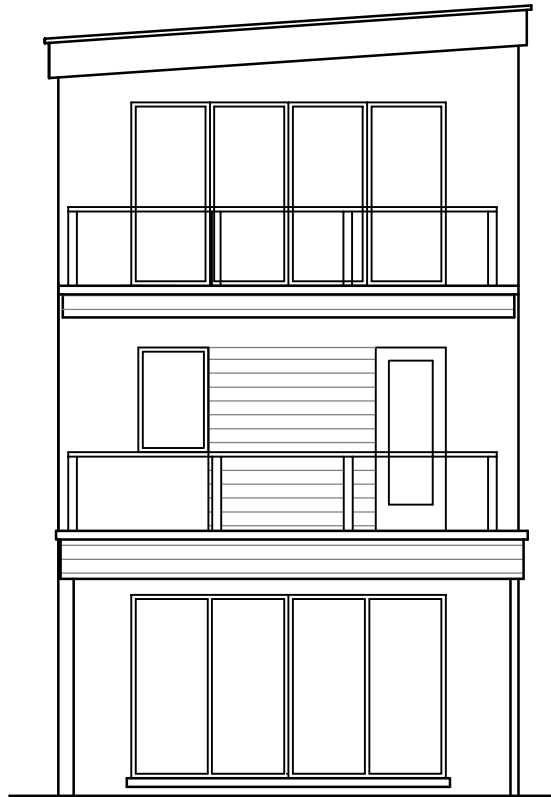
front elevation

inhabit home design

KELLY WILSON DESIGN GROUP INC.
204 HOLBORNE AVE, TORONTO, ON M4C 2R9 416-799-4426

project: **35 wheeler ave, toronto**

date: nov 10, 2011



back elevation

inhabit home design

KELLY WILSON DESIGN GROUP INC.
204 HOLBORNE AVE, TORONTO, ON M4C 2R9 416-799-4426

project: **35 wheeler ave, toronto**

date: nov 10, 2011